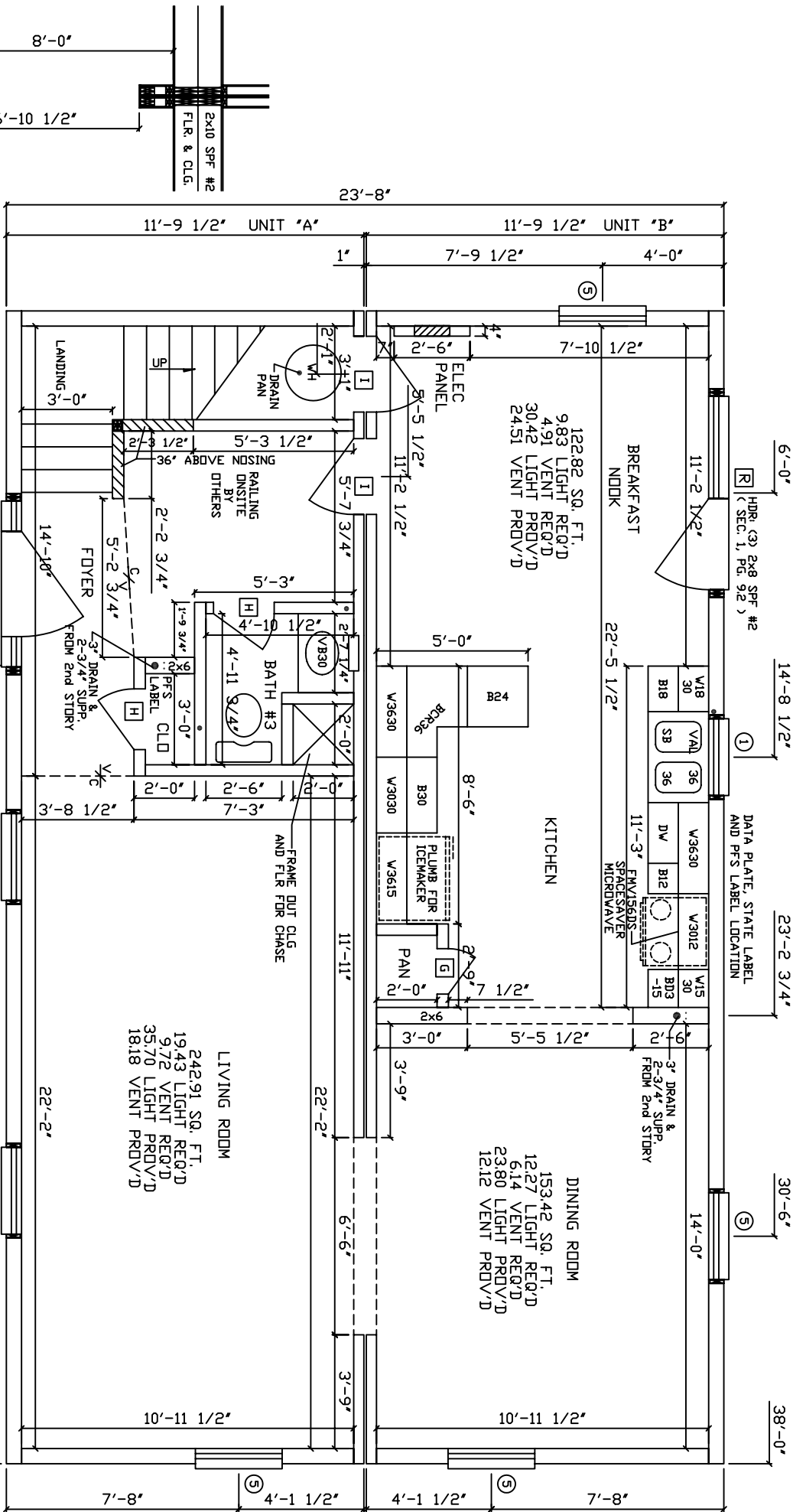


VIRGINIA CODES  
 2003 INTERNATIONAL RESIDENTIAL CODE WITH VA AMENDMENTS  
 2003 INTERNATIONAL ENERGY CONSERVATION CODE  
 2002 NATIONAL ELECTRICAL CODE WITH VA AMENDMENTS

ALL EXT. LOAD BEARING HDR'S: WITH SPAN OF 5'-5" OR LESS WILL BE (3) 2x6 SPF #2 ALL OTHERS WILL BE SPECIFIED. ALL REQUIRED JACK STUDS SHOWN ARE 2x6 SPF #2. ( SEC. 1, PG. 9.2 )

ALL M/W HDR'S: WITH SPAN OF 7'-6" OR LESS WILL BE (4) 2x6 SPF #2 ALL OTHERS WILL BE SPECIFIED. ( SEC. 1, PG. 13.2 )



2x10 FLR JOIST  
 2x10 SPF #2  
 FLR. & CLG.  
 8'-0"  
 6'-10 1/2"  
 1ST FLR OF A 2-STORY  
 WITH A STANDARD DROPPED  
 MARRIAGE WALL HEADER  
 AT DINING TO LIVING ROOM OPENING

SIDING=25 1/2 SQ  
 SHINGLES=13 2/3 SQ